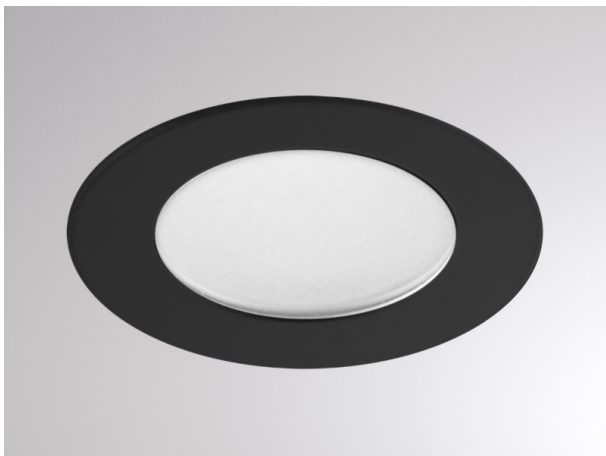


## STAR

68-669202ww

STAR IP RECESSED CEILING LUMINAIRE made of aluminium, black, light output direct, without converter, max. 150mA, dimmability: see converter, IP65

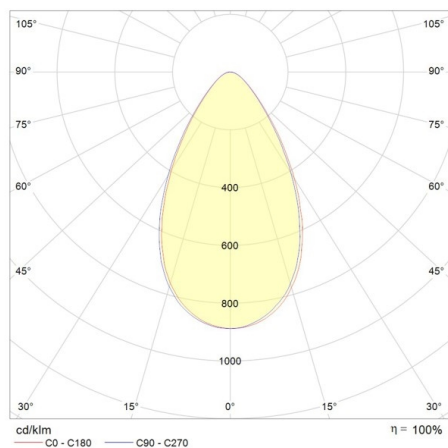


## DRAWING

## TECHNICAL DETAILS

System perform. [W]	3
Bulb type	LED 3W
Luminous flux [lm]	106
Current sec. [mA]	150
Colour temp. [K]	3000K
CRI	>80
Converter	without converter
Dimming	see converter
Light output	direct
Material	aluminium
Length [mm]	44
Width [mm]	44
Ceiling cutout [mm]	40
Recess depth [mm]	71
IP protection class	IP65
Voltage class	protection cl. III
Net weight [kg]	0,12
Colour lamp	black
Energy efficiency cl.	F

## LIGHT DISTRIBUTION CURVE



The values are rated values. Power and luminous flux are initially subject to a tolerance of +/- 10%. Colour temperature tolerance: +/- 150 K. The values apply to an ambient temperature of 25°C unless otherwise specified.