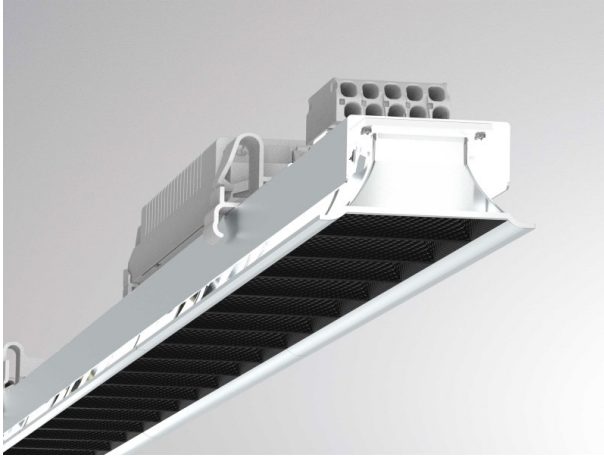


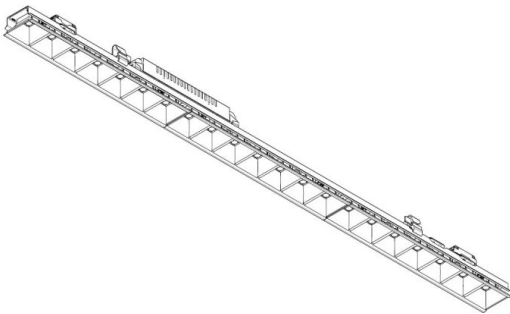
## LOG 50 SYSTEM

715-170411071900d

LOG 50 OFFICE EINSATZ LIGHT INSERT made of metal, Lens optics with vacuum deposited Dark reflector beam 66°, light output direct, UGR <16, with converter, max. 340mA, dimmability: DALI, through wiring 3x1,5mm<sup>2</sup> + 2x0,75mm<sup>2</sup>, IP20



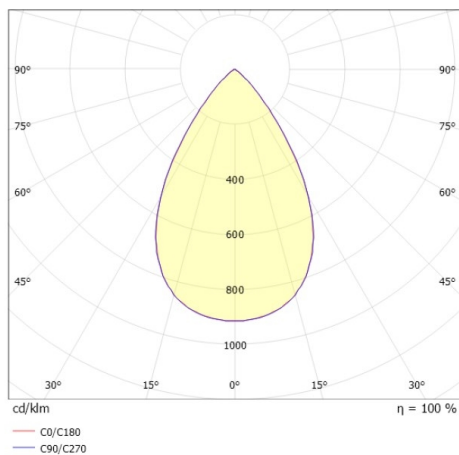
## DRAWING



## TECHNICAL DETAILS

System perform. [W]	16
Bulb type	LED
Luminous flux [lm]	1910
Current sec. [mA]	340
Colour temp. [K]	3000K
CRI	>80
UGR	<16
Optics	Lens optics with vacuum deposited Dark reflector
Designer	INHOUSE
Converter	with converter
Light output	direct
Beam angle [°]	66°
Voltage [V]	220-240V 50/60Hz
Through wiring	3x1,5mm <sup>2</sup> + 2x0,75mm <sup>2</sup>
Material	metal
Length [mm]	841,5
Width [mm]	49
Height [mm]	50
IP protection class	IP20
Voltage class	protection cl. I
Net weight [kg]	1,16
EAN-Number	9010870550445
Lifetime [h]	L80 B10 50 000
Energy efficiency cl.	D
No. of luminaires B16A	50

## LIGHT DISTRIBUTION CURVE



The values are rated values. Power and luminous flux are initially subject to a tolerance of +/- 10%. Colour temperature tolerance: +/- 150 K. The values apply to an ambient temperature of 25°C unless otherwise specified.