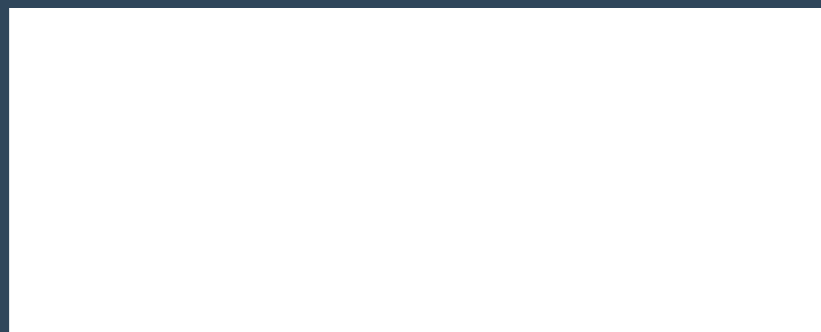


GOOD
LIGHT
STORIES

AUSTRIA | MOLTO LUCE GMBH

HEADQUARTERS WELS
Office & Showroom
Europastraße 45
4600 Wels
T: +43 7242 698-0
M: office@moltoluce.com

www.moltoluce.com



MOLTO LUCE®



INDUSTRY GUIDE

MOLTO LUCE®

INDEX

LIGHT FOR PRODUCTION & LOGISTICS

PAGE 04-05

INDUSTRY GUIDE

PAGE 06-07

OUT WITH FLUORESCENT TUBES

PAGE 08-09

TRAIL

PAGE 10-27

TUNE

PAGE 28-37

3ONE

PAGE 38-49

TIGO

PAGE 50-51

LIGHT FOR PRODUCTION & LOGISTICS

As an Austrian specialist in high-quality lighting solutions, we have expanded our portfolio of quality luminaires to include a comprehensive range for industry and commerce. With our three new product series, we offer the ideal solution for every use:

- ▶ Trunking system **TRAIL**
- ▶ Highbay **TUNE**
- ▶ Damp-proof **3ONE/TIGO**

- High lighting quality and ideal visual conditions for every kind of activity
- Future and operational safety guaranteed, thanks to durable quality components
- High efficiency, thanks to intelligent lighting systems
- Optimised light output for every time of day and night
- Up to 90% energy and costs saving possible
- Significant contribution to sustainability by saving CO2



Find more info here

INVESTEMENTS WITH EXTREMELY FAST PAYBACK TIME

The changeover to a new, efficient lighting system will pay for itself in a very short time. Take a look at the examples of the amortisation calculations for our three product families **TRAIL** (p.10), **TUNE** (p.28) and **3ONE** (p.38).

LIGHT 4.0 WHEN LIGHT COMMUNICATES

Direct communication (Bluetooth Mesh) between sensors and luminaires helps to create intelligent systems that enable simple and fast commissioning. Future adjustments can therefore be made very easily.

INDUSTRY GUIDE

Light planning according to European standards
 With our online tool Industry guide you can easily find the right lighting system for your specific application. After a few clicks and configuring special requirements you receive a precisely targeted selection of suitable products. All displayed products meet Lighting standards and minimum requirements of the selected application.

1. Selection of the task or activity areas

2. By configuring special and appropriate requirements, you receive a standardized and appropriate selection of lighting solutions

The table summarizes the minimum lighting requirements for selected task and activity areas that meet European standard EN12464-1:2021, as well as technical regulation for workplaces ASR A3.4 in Germany.

You can name different rooms in your project

Logistics and warehouse
Open warehouses

Special requirements

If you change the filter, the products that do not match the filter will be removed from the application.

IFS compliant (food)

Yes

Planned room temperature

°C °C


IP protection

>= IP20

Required light levels


	Erforderlich	Modifiziert
Em	200	300
Uo		0,4
Ra		80
RUGL		25
Em,z		50
Em,Wand		50
Em,Decke		30

Recommended products for Logistics and warehouse -> Open warehouses




TRAIL LIGHT INSERT
 TRAIL LIGHT INSERT MOUNTING RAIL LIGHT INSERT made of aluminium, white, similar to RAL 9016, linear optics beam asymmetric, light output direct, with converter, max. 250mA, dimmability: DALI, through wiring 7-polig, IP20

Detail References Select




Molto Luce Production/Warehouse



TUNE M GLAS
 TUNE M GLAS HIGH-BAY REFLECTOR LUMINAIRE made of aluminium, silver, similar to RAL 9006, high quality plastic lens beam 75°, accessoire: glass, light output direct, UGR <22, with converter, max. 3500mA, dimmability: schaltbar, 1-10V, IP66

Detail Select



3ONE
 3ONE DIFFUSER LUMINAIRE made of glass fibre reinforced polyester, grey, similar to RAL 7035, polycarbonate cover light output direct, UGR <28, with converter, dimmability: not dimmable, through wiring 5x2,5mm², IP66

Detail Select


Room name
To overview
Save and continue

Clicking on details take you directly to the product site for more information and other product variants.

Under references you will find application examples of the respective luminaire.

Select one or more products to direct your query to one of our contacts.

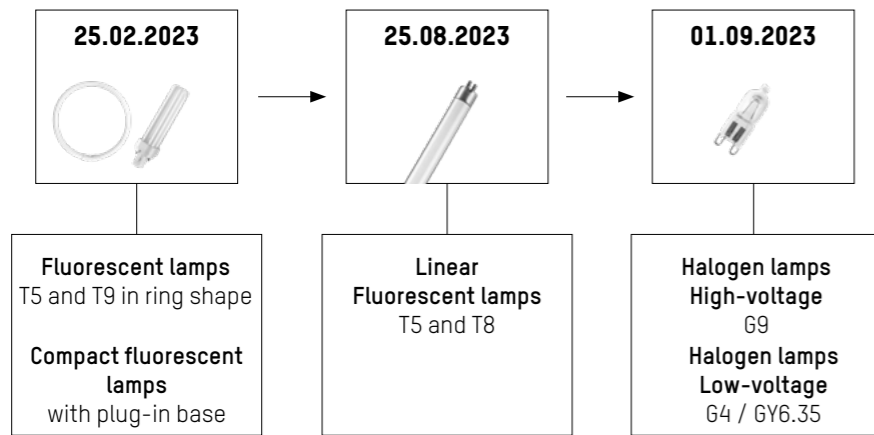
Go to the online industry guide here



”OUT WITH FLUORESCENT TUBES”

WHY YOU SHOULD REFURBISH YOUR OLD LIGHTING SYSTEM NOW

RoHS Regulation ensures the end of Fluorescent lamps and halogen lamps



EU Ecodesign Directive - ban on fluorescent lamps from 2023 onwards

Ban on fluorescent lamps

From February 2023, the EU will gradually ban the placing on the market of fluorescent lamps. Get ready by upgrading to a future-proof lighting system.

Rising energy prices

There is no end in sight for the massive price increases in the energy sector, due to current developments. Up to 80% of costs can be saved by converting to an energy-efficient and low-maintenance lighting system. Converting older LEDs to modern LED light systems can also pay off.

In the sense of sustainability

Compared to old lighting system, modern lighting solutions require significantly less luminaires for the same illuminance and have a much longer service life at the same time. By combination with intelligent sensor technology you can also sustainably reduce your CO2 emissions.



PROJECT
MÜLLER TRANSPORTE, WR. NEUDORF

Trail trunking system with state-of-the-art LED technology



original installation

Molto Luce warehouse

	original installation	new installation
Operating data		
Lighting system	T5 light source	TRAIL trunking system
Number of luminaires	156 units	36 units
Rated input power	53 W	60 W
Total input power	8268 W	2160 W -74%
Illumination level Em	220 lx	214 lx
CO ₂ emission (year)	5.5 tones	0.5 tones -91%

Operational costs/year		
Total power consumption	24,804 kWh	2333 kWh
Energy costs*	€12,402	€1166,50 -91%

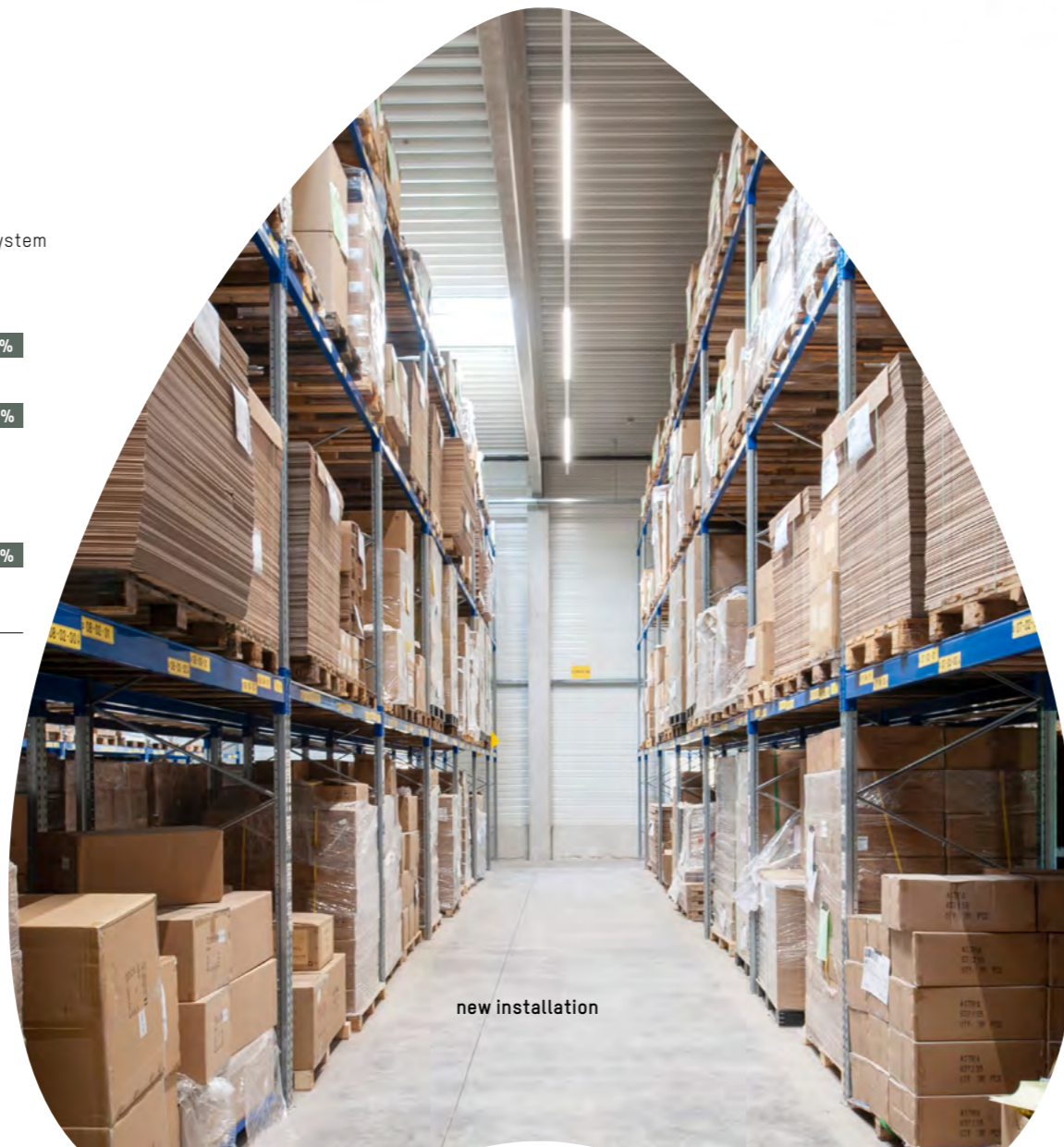
*Assuming an average electricity price of 0.5 Euro per kWh

Payback calculation	
Investment costs including installation	€19,685
Energy costs saving/year	€11,235,50

**Payback time:
1.75 years**

GOOD
LIGHT
STORIES

TRAIL



new installation

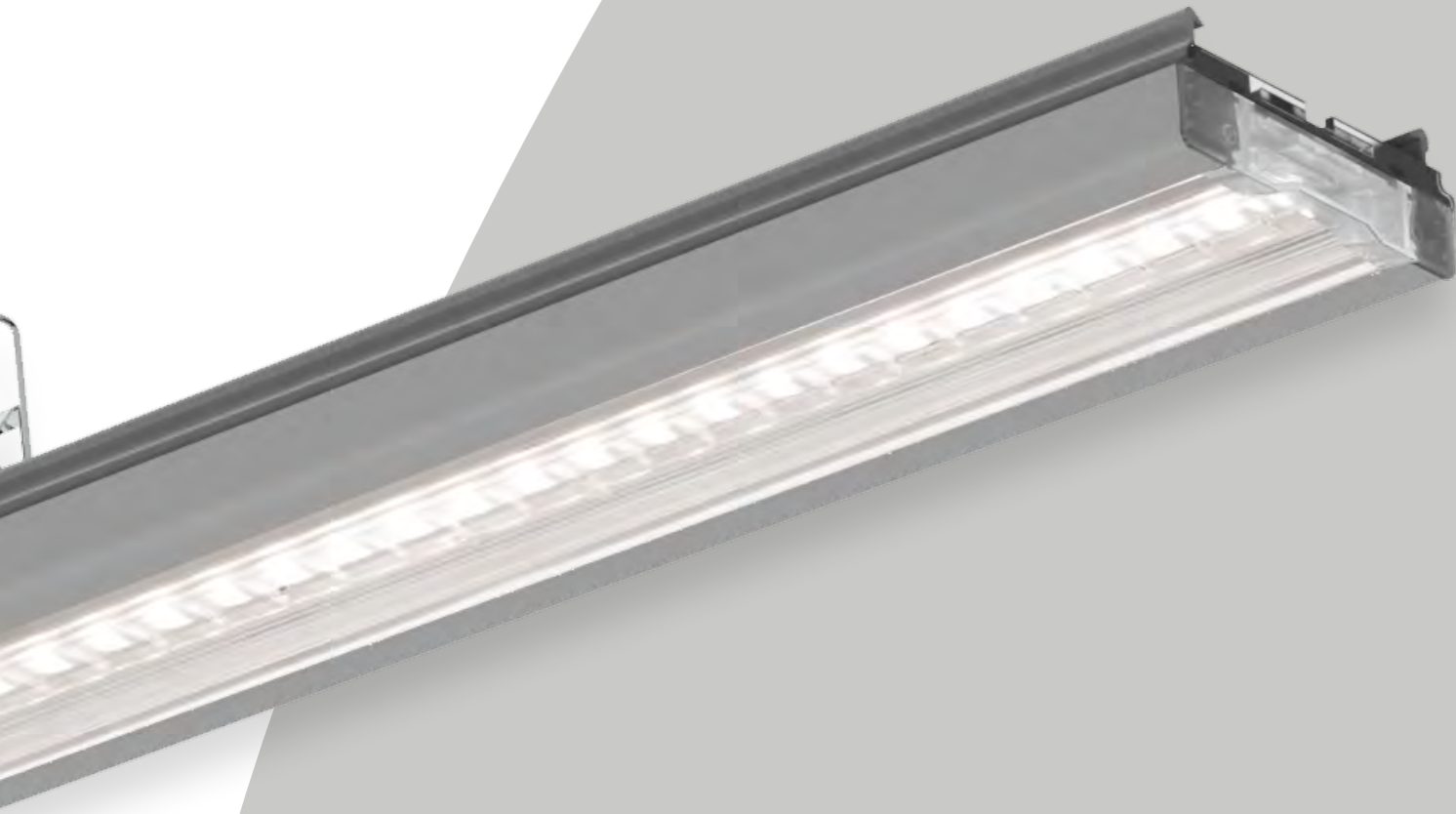
TRAIL refurbishment concept

- Up to 90% energy saving
- Continuous through-wiring enables individual arrangement of all lighting inserts and major time savings during installation
- Flexible system - easily adaptable to individual needs and changed conditions
- Efficient vertical illumination and homogeneous light distribution

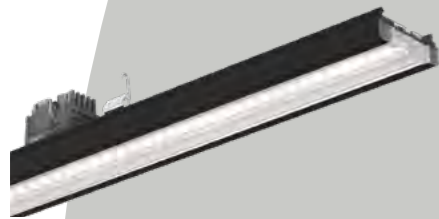
TRAIL product details



LIGHT INSERT IP20



grey



black



white

LENGTHS

1137 / 1696 / 2255 mm

EFFICACY

up to 180 lm/W

RATED SERVICE LIFE

up to 100,000h L90 B10

AMBIENT TEMPERATURE

-25°C to 50°C

The aluminium structure guarantees excellent heat dissipation, thereby enabling high efficiency, a long service life and usage at high ambient temperatures.

COLOUR TEMPERATURES

3000K / 3500K / 4000K / 5000K / 6500K

Other colour temperatures or CRI90 are available on request.

LUMEN OUTPUT



HIGH EFFICACY
3380-8780 lm



MID OUTPUT
5260-13,660 lm



HIGH OUTPUT
7570-19,660 lm

LIGHT CONTROL

ON/OFF

DALI

DALI D4i

TRAIL light inserts are fitted with ON/OFF, DALI, DALI D4i ballasts for different control options. HIGH OUTPUT light inserts are equipped with D4i EVGs with integrated power supply as a standard. The ideal combination with TRAIL sensors enables light-specific data to be used for predictive maintenance and diagnosis.

BEAM ANGLES



narrow beam



high rack



medium beam



wide beam



asymmetrical

Efficient lenses ensure glare-free visual comfort and absolutely homogeneous light distribution.

TRAIL TRUNKING RAILS



7-pole



11-pole

Find more info here

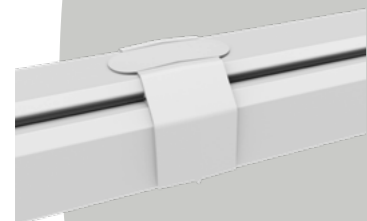


LIGHT INSERT IP54

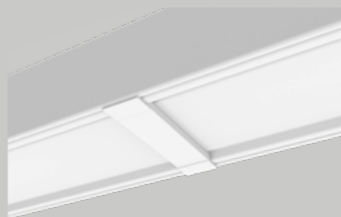


white

SYSTEM ACCESSOIRES



RAILS JOINT SEAL IP54



END CAP IP54 FOR BLIND COVER



END CAP IP54

TRAIL LIGHT INSERT IP54

LENGTHS

1137 / 1696 / 2255 mm

EFFICACY

up to 175 lm/W

RATED SERVICE LIFE

up to 100,000h L90 B10

AMBIENT TEMPERATURE

-25°C to 50°C

The aluminium structure guarantees excellent heat dissipation, thereby enabling high efficiency, a long service life and usage at high ambient temperatures.

COLOUR TEMPERATURES

3000K / 3500K / 4000K / 5000K / 6500K

Other colour temperatures or CRI90 are available on request.

LUMEN OUTPUT



HIGH EFFICACY
3770-8780 lm



MID OUTPUT
5870-13,660 lm



HIGH OUTPUT
8540-19,650 lm

LIGHT CONTROL

ON/OFF

DALI

DALI D4i

TRAIL light inserts are fitted with ON/OFF, DALI, DALI D4i ballasts for different control options. HIGH OUTPUT light inserts are equipped with D4i EVGs with integrated power supply as a standard. The ideal combination with TRAIL sensors enables light-specific data to be used for predictive maintenance and diagnosis.

BEAM ANGLES



diffuse



high rack



medium beam



wide beam



asymmetrical

Efficient lenses ensure glare-free visual comfort and absolutely homogeneous light distribution.

TRAIL TRUNKING RAILS



7-pole



11-pole

Find more info here



TRAIL LIGHT INSERT IP54

LIGHT INSERT CUBIC

IP54



prismatic - wide beam



opal - diffuse



prismatic - narrow beam

LENGTHS

1137 / 1696 / 2255 mm

EFFICACY

up to 177 lm/W

RATED SERVICE LIFE

up to 100,000h L90 B10

AMBIENT TEMPERATURE

-25°C to 50°C

The aluminium structure guarantees excellent heat dissipation, thereby enabling high efficiency, a long service life and usage at high ambient temperatures.

COLOUR TEMPERATURES

3000K / 3500K / 4000K / 5000K / 6500K

Other colour temperatures or CRI90 are available on request.

LUMEN OUTPUT



HIGH EFFICACY
4100-9680 lm



MID OUTPUT
6150-14,520 lm



HIGH OUTPUT
8200-19,370 lm

LIGHT CONTROL

ON/OFF

DALI

DALI D4i

TRAIL light inserts are fitted with ON/OFF, DALI, DALI D4i ballasts for different control options. HIGH OUTPUT light inserts are equipped with D4i EVGs with integrated power supply as a standard. The ideal combination with TRAIL sensors enables light-specific data to be used for predictive maintenance and diagnosis.

BEAM ANGLES



diffuse



high rack



wide-angled beam

Efficient lenses ensure glare-free visual comfort and absolutely homogeneous light distribution.

TRAIL TRUNKING RAILS



7-pole



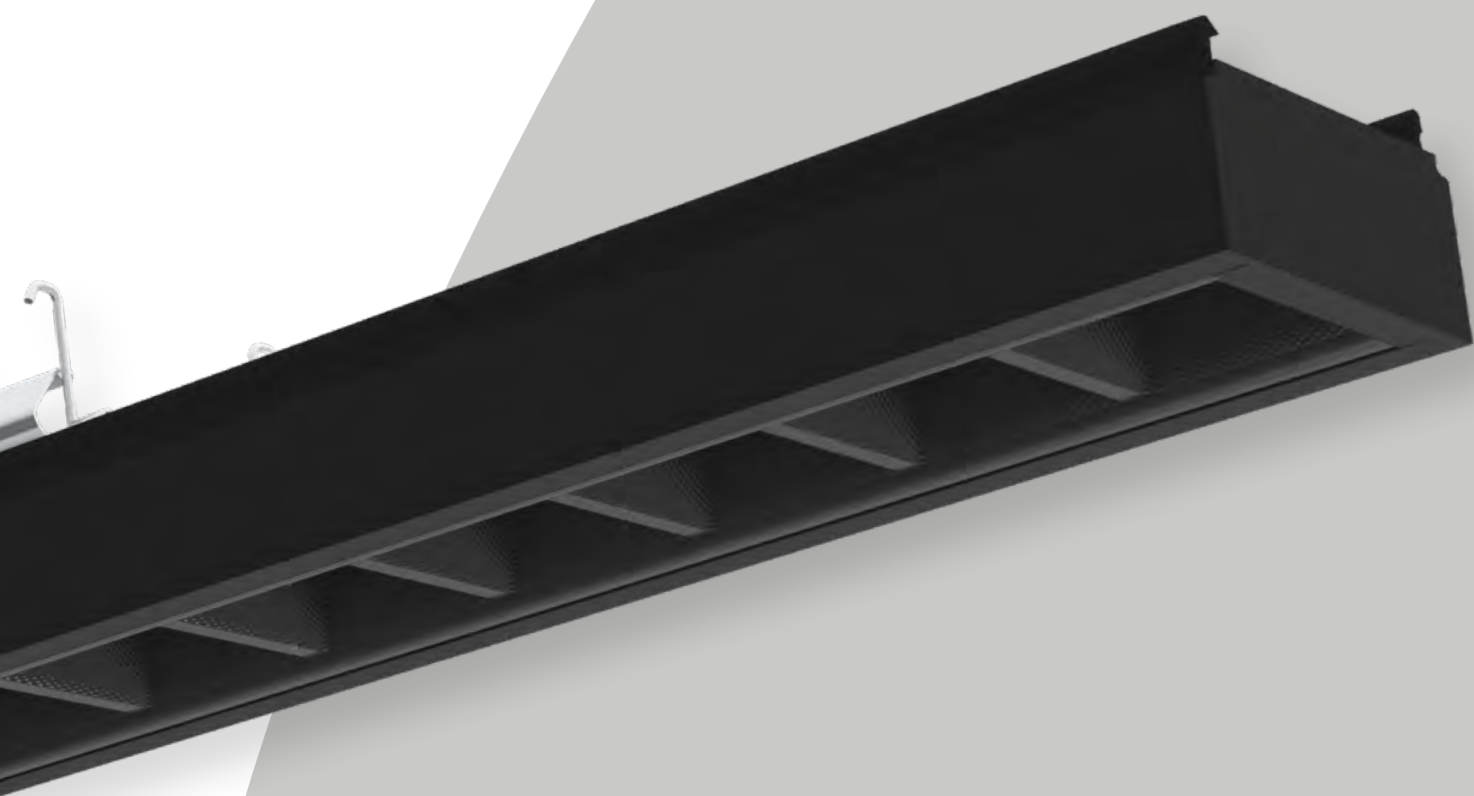
11-pole

Find more info here

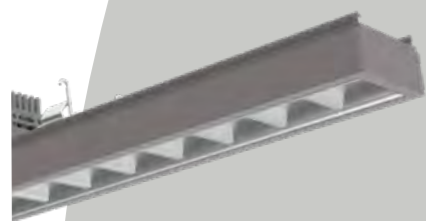


LIGHT INSERT OFFICE

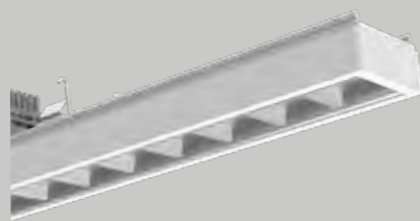
IP20



black



grey



white

LENGTHS

1137 / 1696 / 2255 mm

EFFICACY

up to 162 lm/W

RATED SERVICE LIFE

up to 50,000h L90 B10

AMBIENT TEMPERATURE

-20°C to 50°C

The aluminium structure guarantees excellent heat dissipation, thereby enabling high efficiency, a long service life and usage at high ambient temperatures.

COLOUR TEMPERATURES

2700K / 3000K / 3500K / 4000K

Other COLOUR TEMPERATURES or CRI90 are available on request

LUMEN OUTPUT



HIGH EFFICACY
2730-6800 lm
UGR<16



MID OUTPUT
4810-11,980 lm
UGR<19

LIGHT CONTROL

ON/OFF

DALI

TRAIL light inserts are fitted with ON/OFF and DALI ballasts for different control options.

BEAM ANGLES



dark
<1500 cd·m⁻²



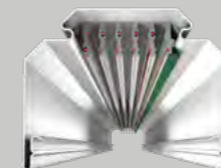
basic
<3000 cd·m⁻²

Efficient lenses ensure glare-free visual comfort and absolutely homogeneous light distribution. The optics are suitable for workplaces with screens.

TRAIL TRUNKING RAILS



7-pole



11-pole



LIGHT CONTROLS

SENSOR APPLICATION

DESCRIPTION

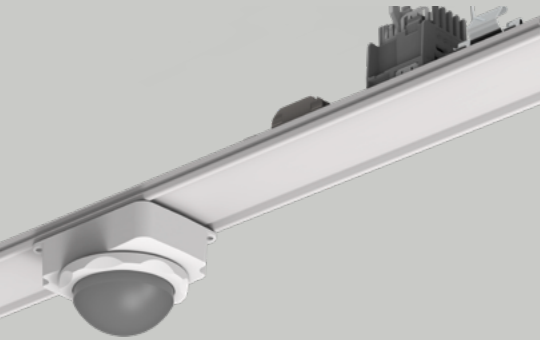
BENEFITS

DETECTION AREAS

Find more info here



INDUSTRY

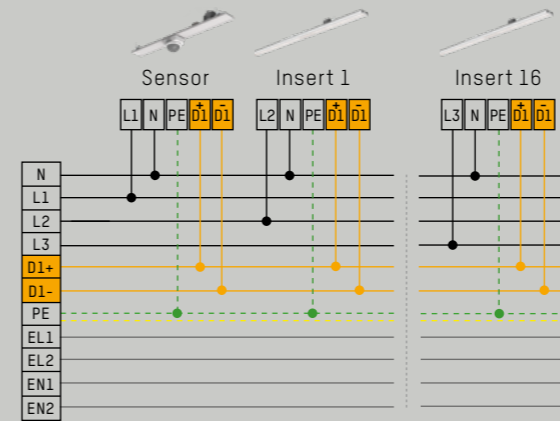


Multi-sensor INDUSTRY

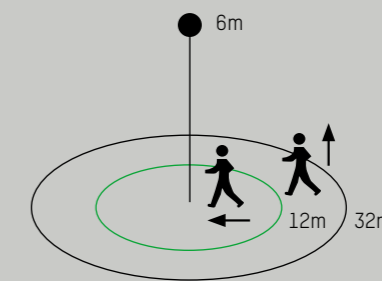
- Passive infrared sensor for warehouses and production halls
- With integrated light sensor up to 1000 lx
- Installation height up to 14 m
- Two detection areas – circular 3360 up to Ø 36m, square 345 30 x 4m
- Bluetooth range up to 35 m (standalone)
- Protection class IP65
- Ambient temperature -20°C to 50°C

Standalone

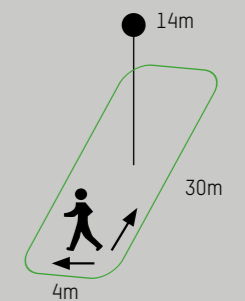
- Up to 60% energy saving
- Full functionality without central light management system, no programming required
- Includes DALI bus power supply
- Bluetooth Mesh network
- Constant-light control, any selectable main and basic light level
- Up to 16 DALI LED drivers can be connected
- Commissioning and control via free APP



MOTION DETECTOR 3360



MOTION DETECTOR 345



OFFICE

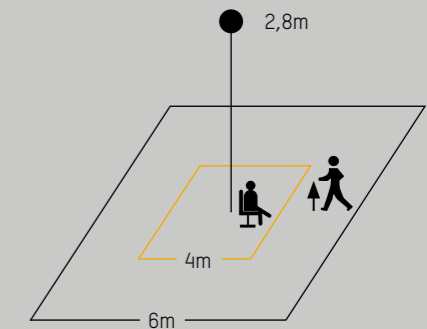
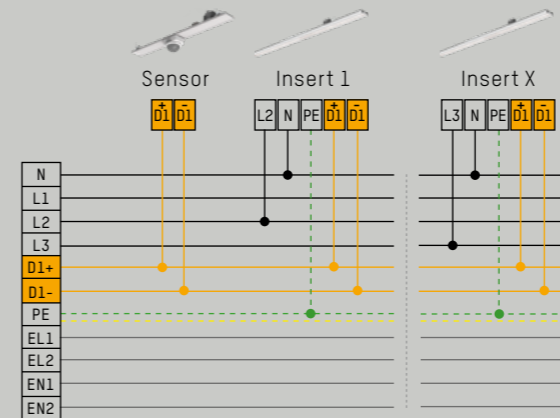


Multi-sensor OFFICE

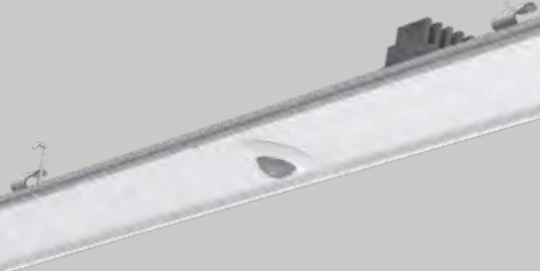
- Motion and presence sensor for lower installation height of 2-5m
- With integrated light sensor up to 1000 lx
- Optimal installation height of 2,8m with presence detection area 4x4 m
- Bluetooth range up to 25 m (standalone)
- Protection class IP20
- Ambient temperature -25°C to 50°C
- Three housing colours – (white, grey, black)

System input device

- Up to 60% energy saving
- Integrated occupancy sensor & light sensor
- Certified DALI-2 input devices
- Sensors deliver data via any wired classical DALI network to the controller
- Powered from the two DALI bus wires



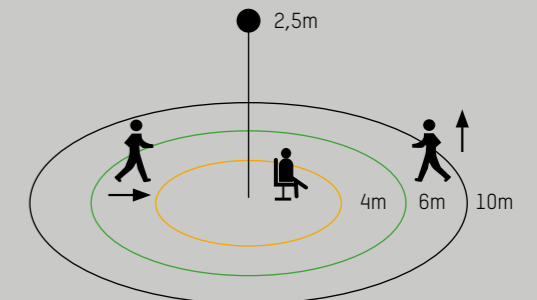
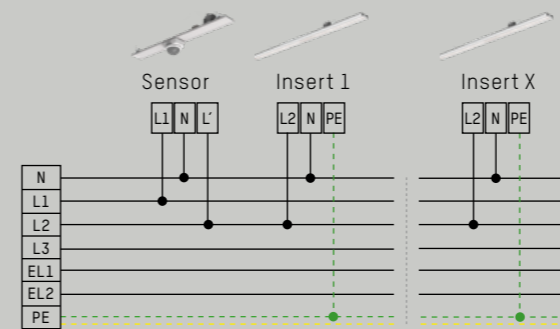
BASIC



Multi-sensor ON/OFF

- Mini-motion detector for installation height up to 5 m
- Ideal for storage/technical rooms, entrance areas, hallways/corridors
- Integrated brightness sensor
- Protection class IP20
- Ambient temperature -25°C to 50°C
- Three housing colours – (white, grey, black)

- Up to 60% energy saving
- one channel for light switching
- Simple settings on the device
- Turn-on threshold 10–2000 lux
- Follow-up time 30 s–30 min

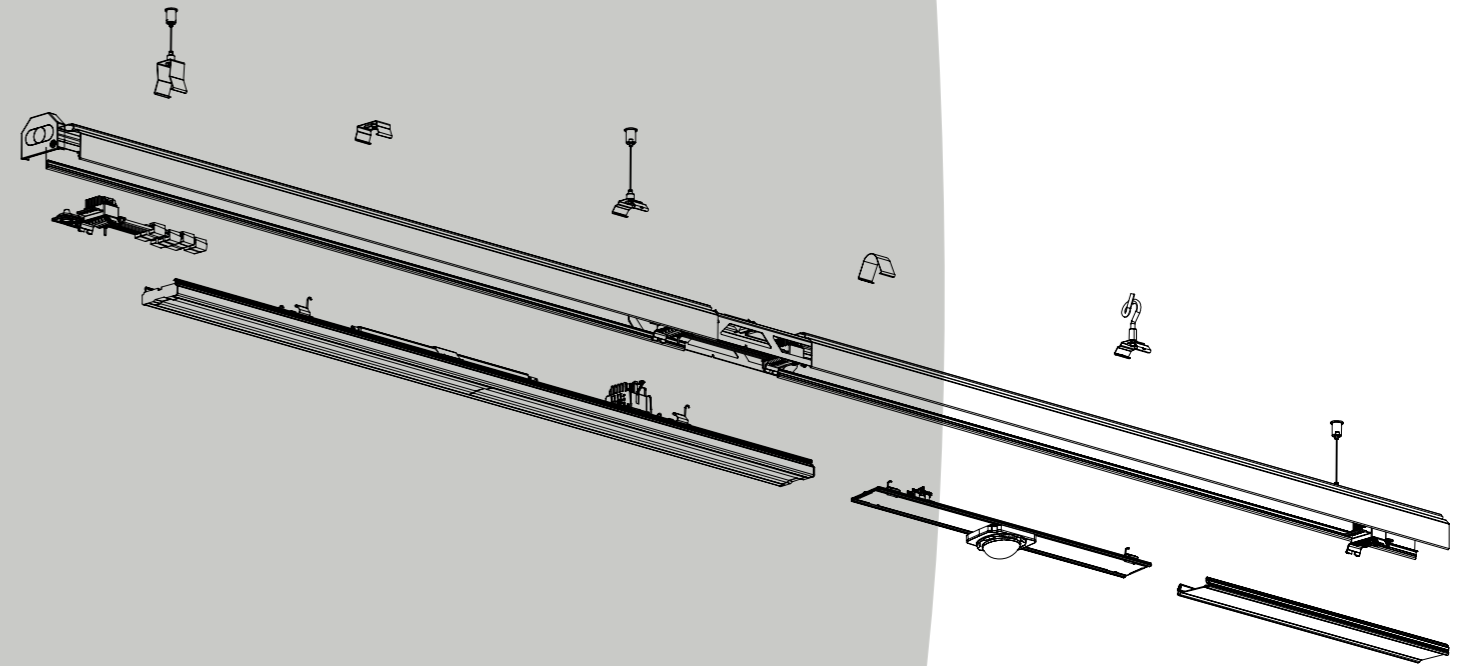


FUNCTION INSERT

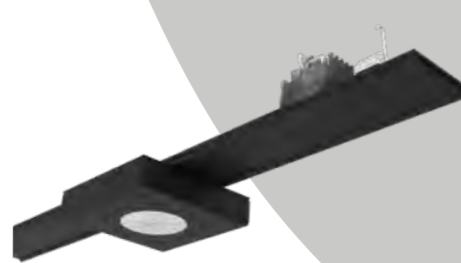


HIGH BAY

ACCESSORIES



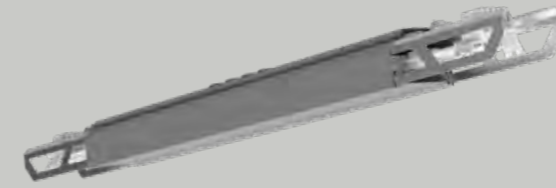
UNIVERSAL ADAPTER



EMERGENCY LIGHTING



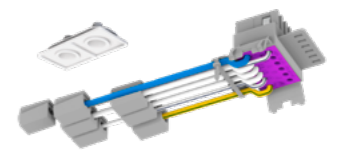
ESCAPE ROUTE SIGN



CENTRAL FEED



SINGLE TRUNKING RAIL



RAIL ELECTRIC FEED-IN/OUT



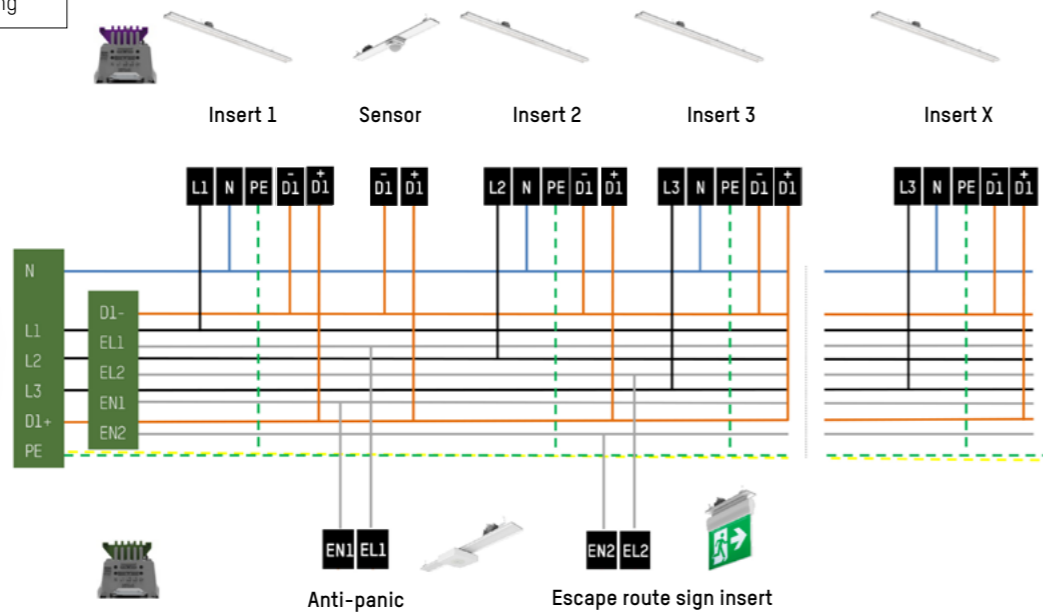
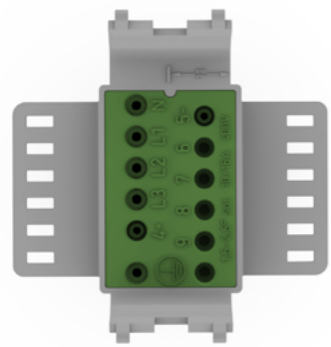
FUNCTION INSERTS



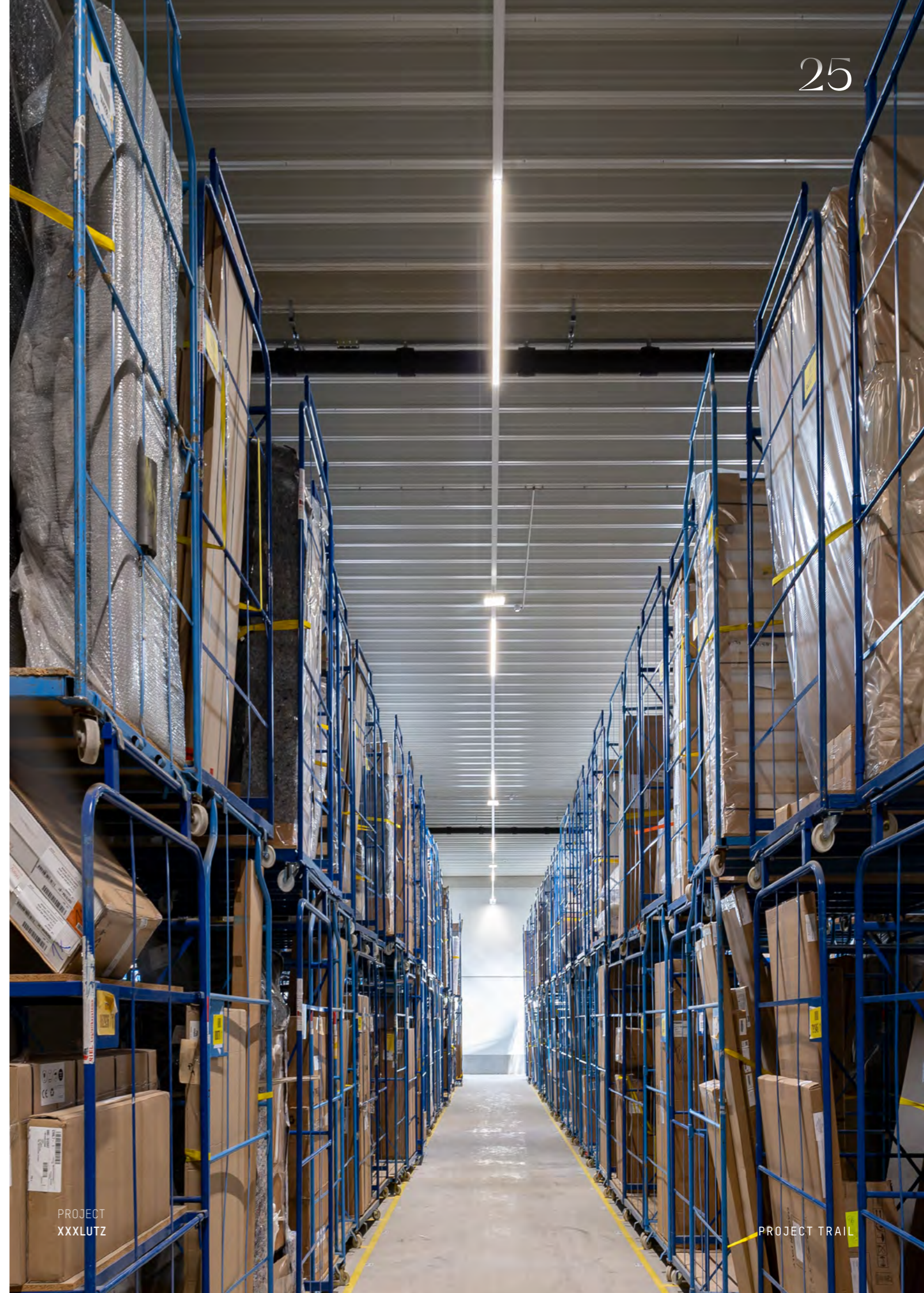
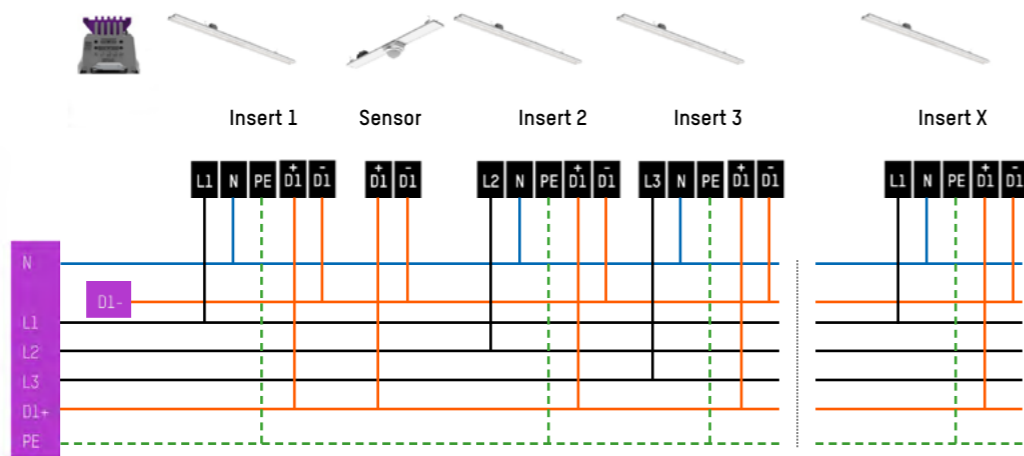
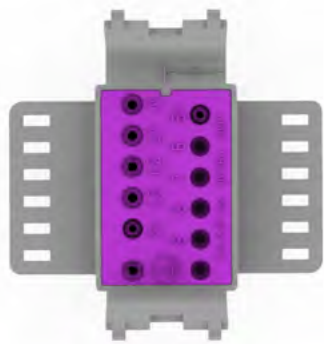
Find TRAIL accessories here

WIRING

11-pole rail
DALI-2 light & motion control
+ 2 circuits for emergency lighting



7-pole rail
DALI-2 light & motion control

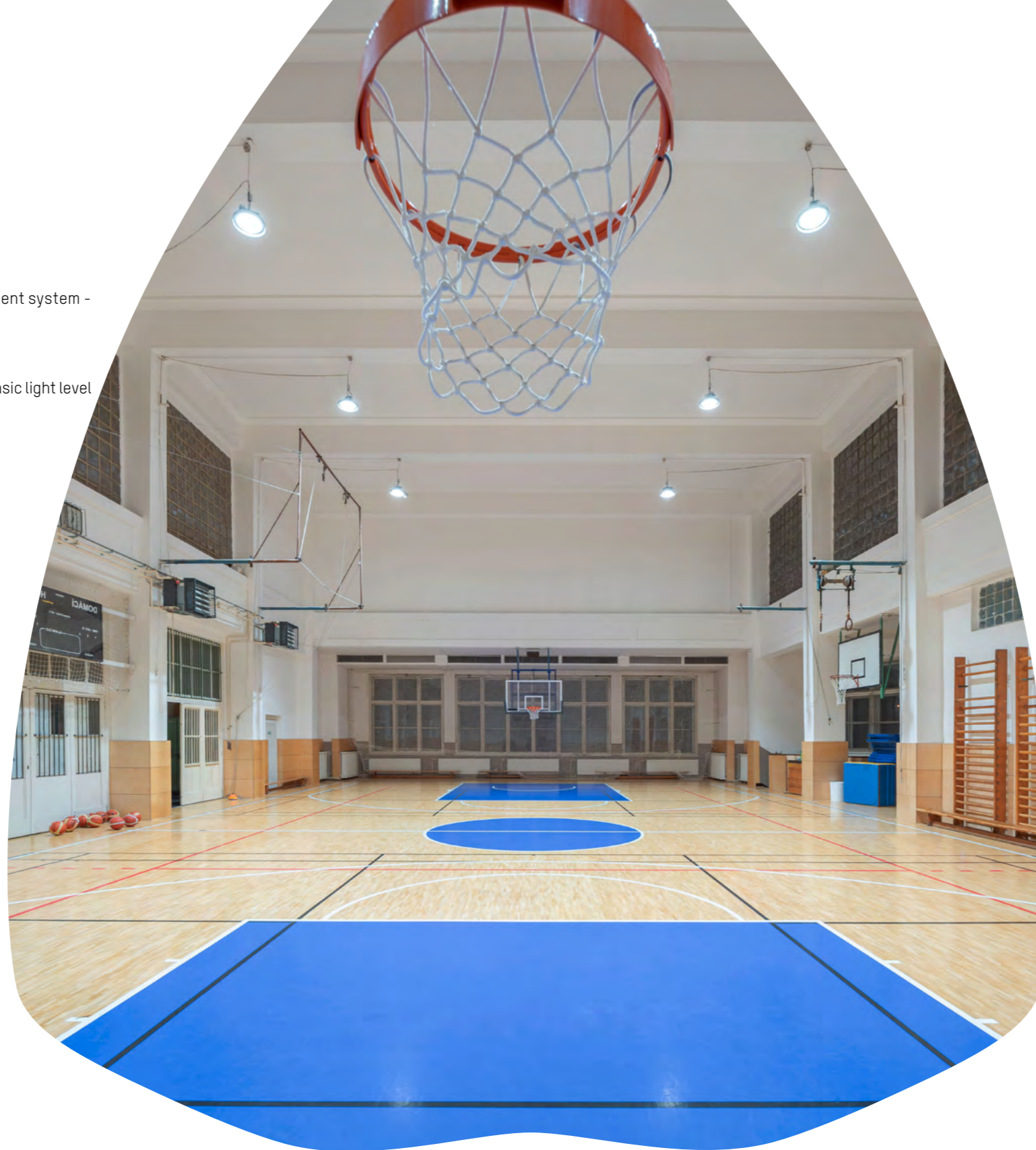




Standalone light control concept

- Up to 90% energy saving
- Full functionality without central light management system - no programming required
- Includes DALI bus power supply
- Bluetooth Mesh network
- Constant-light control, any selectable main and basic light level
- Up to 16 DALI LED drivers can be connected
- Commissioning and control via free APP

TUNE product details



Gym

	original installation	new installation	
Operating data			
Lighting system	HQL 400 W	TUNE High Bay	
Number of luminaires	16 units	16 units	
Rated input power	440 W	98 W	
Total input power	7040 W	1568 W	-78%
Illumination level Em	300 lx	308 lx	
CO ₂ emission (year)	11.9 tones	1.9 tones	-84%

Operational costs/year			
Total power consumption	26,400 kWh	4116 kWh	
Energy costs*	€13,200	€2058	-84%

*Assuming an average electricity price of 0.5 Euro per kWh

Payback calculation	
Investment costs including installation	€ 6638
Energy costs saving/year	€11,142

**Payback time:
0.6 years**

GOOD
LIGHT
STORIES

TUNE

TUNE

IP66



TUNE S PC

SIZES

Ø 280 / 360 mm

EFFICACY

up to 160 lm/W

RATED SERVICE LIFE

up to 70,000h L80 B10

AMBIENT TEMPERATURE

-30°C to 50°C

The aluminium structure guarantees excellent heat dissipation, thereby enabling high efficiency, a long service life and usage at high ambient temperatures.

COLOUR TEMPERATURES

4000K / 6500K

LUMEN OUTPUT

10,980-27,250 lm

LIGHT CONTROL

ON/OFF

DALI-2 D4i

TUNE highbays are fitted with ON/OFF and DALI-2 D4i ballasts for different control options. TUNE Highbay with DALI-2 D4i EVG provides a wide range of lighting, energy and diagnostic data in a standardised file format.

BEAM ANGLE



The patented honeycomb optics guarantee outstanding visual comfort (UGR<22/25) and a high impact resistance of IK10 (PC cover), IK08 (glass cover).

MOUNTING OPTIONS



TRAIL ADAPTER

WALL/CEILING
BRACKETSUSPENSION
EYELET

Find more info here



TUNE MASTER^{IP65}



TUNE M GLASS MASTER 3360

SIZES

Ø 280 / 360 mm

EFFICACY

up to 160 lm/W

RATED SERVICE LIFE

up to 70,000h L80 B10

AMBIENT TEMPERATURE

-30°C to 50°C

The aluminium structure guarantees excellent heat dissipation, thereby enabling high efficiency, a long service life and usage at high ambient temperatures.

COLOUR TEMPERATURES

4000K / 6500K

LUMEN OUTPUT

10,980-30,030 lm

LIGHT CONTROL

DALI-2 D4i

TUNE MASTER are fitted with DALI-2 D4i ballasts for different control options and makes use of Bluetooth Mesh DALI-2 sensors with constant-light control, high-precision motion detection, circular 360° (3360) or square (345) detection areas, and wireless communication

BEAM ANGLE



The patented honeycomb optics guarantee outstanding visual comfort (UGR<22/25) and a high impact resistance of IK10 (PC cover), IK08 (glass cover).

MOUNTING OPTIONS



TRAIL ADAPTER

WALL/CEILING
BRACKETSUSPENSION
EYELET

Find more info here



TUNE EXTENSION^{IP65}



TUNE M GLASS EXTENSION

SIZES

Ø 280 / 360 mm

EFFICACY

up to 160 lm/W

RATED SERVICE LIFE

up to 70,000h L80 B10

AMBIENT TEMPERATURE

-30°C to 50°C

The aluminium structure guarantees excellent heat dissipation, thereby enabling high efficiency, a long service life and usage at high ambient temperatures.

COLOUR TEMPERATURES

4000K / 6500K

LUMEN OUTPUT

10,980-30,030 lm

LIGHT CONTROL

DALI-2 D4i

TUNE EXTENSION are fitted with DALI-2 D4i ballasts for different control options. Bluetooth Mesh communication with TUNE Sensor Master.

BEAM ANGLE



The patented honeycomb optics guarantee outstanding visual comfort (UGR<22/25) and a high impact resistance of IK10 (PC cover), IK08 (glass cover).

MOUNTING OPTIONS



TRAIL ADAPTER

WALL/CEILING
BRACKETSUSPENSION
EYELET

Find more info here



ACCESSORIES



BALL PROOF GRID



MOUNTING BRACKET



REFRACTOR FOR TUNE S



CHAIN

Find more info here



ACCESSORIES
TUNE S



ACCESSORIES
TUNE M





GOOD
LIGHT
STORIES

3ONE

underground carpark

	original installation	new installation
Operating data		
Lighting system	T8 2x36 W	3ONE Basic
Number of luminaires	100 units	100 units
Rated input power	64 W	38 W
Total input power	6400 W	3800 W -40%
Illumination level Em	150 lx	207 lx
CO ₂ emission (year)	5.1 tones	1.5 tones -70%

Operational costs/year		
Total power consumption	23,040 kWh	6840 kWh
Energy costs*	€11,520	€3420 -70%

*Assuming an average electricity price of 0.5 Euro per kWh

Payback calculation	
Investment costs including installation	€19,320
Energy costs saving/year	€8100

**Payback time:
2.39 years**

3ONE refurbishment concept

- Easy and fast installation
- Trail rail as backbone base
- Illumination level meets the new standard EN 12464-1:2021
- Up to 70% saving due to optimal combination of luminaires and motion sensors
- Commissioning and control via free APP

Details 3ONE



**LENGTHS**

1277 / 1577 mm

EFFICACY

up to 164 lm/W

RATED SERVICE LIFE

up to 50,000h L80 B10

AMBIENT TEMPERATURE

-20°C to 40°C

FEATURES

- Silicone sealing gasket - high resistance for heavy industrial applications (IP66)
- 5-poles terminal block, max. 2.5 mm² or through wiring 3x / 5x2.5 mm²
- Variants with single battery kit and high frequency sensor available on request
- Very stable GRP housing (glass-reinforced polyester)

COLOUR TEMPERATURES

4000K

Other colour temperatures are available on request.

LUMEN OUTPUT

4000-12,700 lm

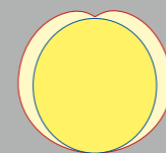
LIGHT CONTROL

ON/OFF

ON/OFF
Multilumen

DALI

3ONE is available with ON/OFF, multi-lumen and DALI ballasts for different control options.

BEAM ANGLE

The PMMA or PC covers with a unique light transmission (93%) create outstanding visual comfort.

MOUNTING OPTIONS

TRAIL RAIL



CEILING



HOOK FOR SUSPENSION

Find more info here



3ONE BASIC

IP66



LENGTHS

1277 / 1577 mm

EFFICACY

up to 140 lm/W

RATED SERVICE LIFE

up to 50,000h L80 B10

AMBIENT TEMPERATURE

-20°C to 35°C

FEATURES

- Non-aging PU (polyurethane) sealing gasket - high resistance for standard applications (IP66)
- 3-poles terminal block, max. 2.5 mm² or through wiring 3x / 5x1.5 mm²
- Variants with single battery kit and high frequency sensor available on request
- Very stable GRP housing (glass-reinforced polyester)

COLOUR TEMPERATURES

3000K / 4000K

Other colour temperatures are available on request.

LUMEN OUTPUT

3200-7000 lm

LIGHT CONTROL

ON/OFF

ON / OFF
Multilumen

DALI

3ONE is available with ON/OFF, multi-lumen and DALI ballasts for different control options.

BEAM ANGLE



The PMMA or PC covers with a unique light transmission (93%) create outstanding visual comfort.

MOUNTING OPTIONS



TRAIL RAIL



CEILING BRACKET



HOOK FOR SUSPENSION

Find more info here



3ONE VISION^{IP66}



LENGTHS

1277 / 1573 mm

EFFICACY

up to 145 lm/W

RATED SERVICE LIFE

up to 50,000h L80

AMBIENT TEMPERATURE

-25°C to 40°C

FEATURES

- Non-aging PU (polyurethane) sealing gasket - high resistance for standard applications (IP66)
- 3-pole terminal block, max. 2.5 mm² or through wiring 3x / 5x1.5 mm²/5x2.5 mm²
- Variants with single battery kit and high frequency sensor available on request
- Transparent PC housing (polycarbonate) with stainless steel fastening clips

COLOUR TEMPERATURES

4000K

Other colour temperatures are available on request.

LUMEN OUTPUT

4000-6000 lm

LIGHT CONTROL

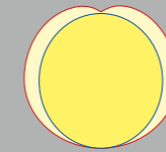
ON/OFF

ON / OFF
Multilumen

DALI

3ONE is available with ON/OFF, ON/OFF multi-lumen and DALI ballasts for different control options.

BEAM ANGLE



Transparent PC housing with a high indirect component provides the ideal solution for underground car parks. Available on request with primary optics that can optimise the light control, depending on the application.

MOUNTING OPTIONS



CEILING BRACKET



HOOK FOR SUSPENSION

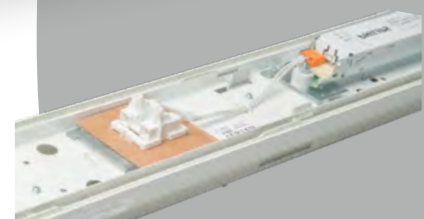
Find more info here



3ONE SPECIAL PERFORMANCE



3ONE SKII



3ONE SKII



3ONE H&L



3ONE EXTREME



3ONE OUTDOOR

Find more info here



3ONE SKII



3ONE H&L

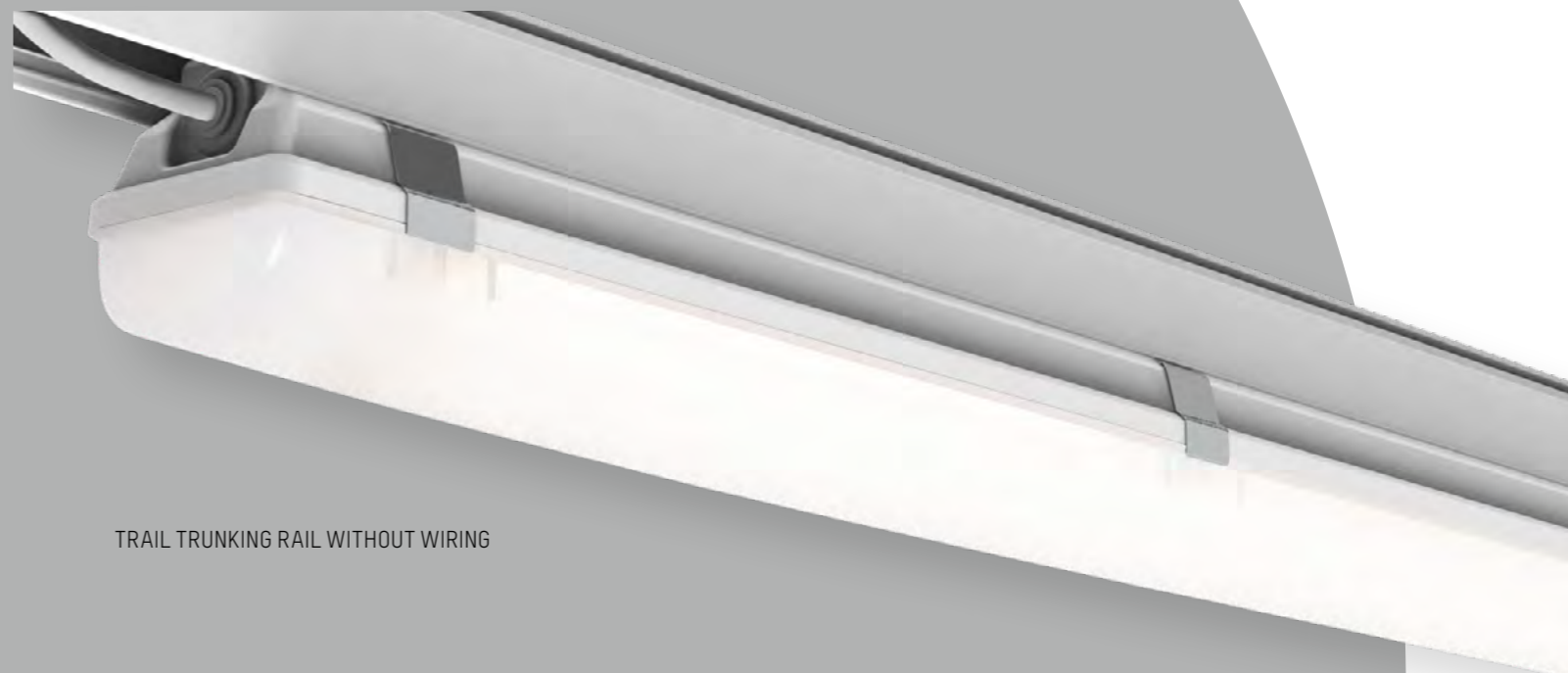


3ONE EXTREME



3ONE OUTDOOR

ACCESSORIES



TRAIL TRUNKING RAIL WITHOUT WIRING



VENTING CABLE GLAND



ROPE FIXATION



BLIND COVER

Find 3ONE accessories here







LENGTHS

1192 / 1492 mm

EFFICACY

up to 133 lm/W

RATED SERVICE LIFE

up to 50,000h L80 B10

AMBIENT TEMPERATURE

-20°C to 35°C

FEATURES

- Tool-free connection via pull-out tray for simple and quick installation
- 3-pole terminal block, max. 2.5 mm² or through wiring 3x / 5x 1.5 mm²

COLOUR TEMPERATURES

4000K

Other colour temperatures are available on request.

LUMEN OUTPUT

HIGH EFFICACY

3250-6500 lm

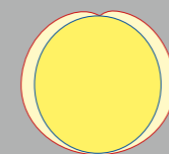
LIGHT CONTROL

ON/OFF

DALI

TIG0 is available with ON/OFF and DALI ballasts for different control options.

BEAM ANGLE



The solid PC housing enables excellent light transmission and glare elimination.

MOUNTING OPTIONS



CEILING BRACKET



HOOK FOR SUSPENSION

Find more info here

